

NOTES

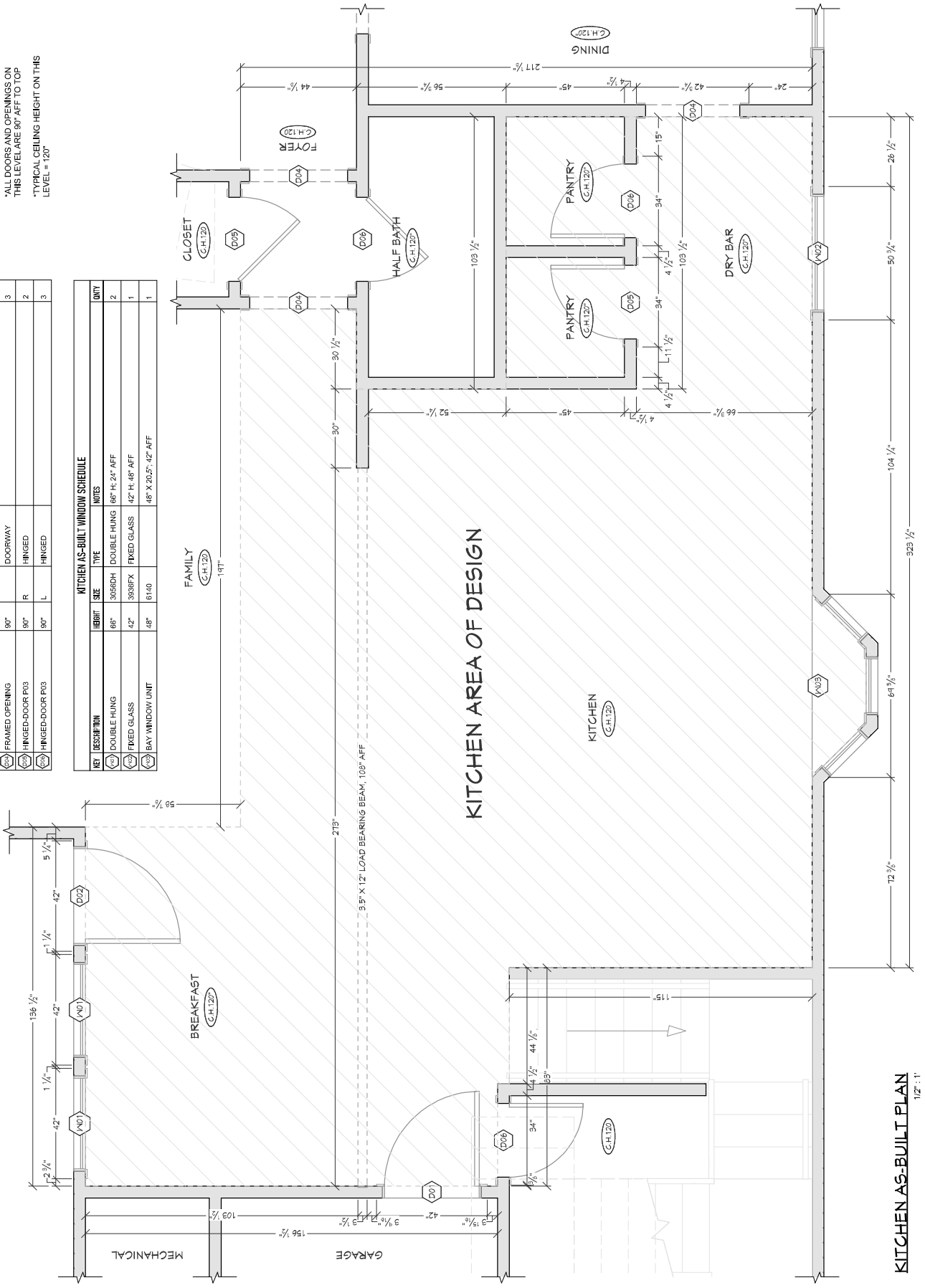
AREA OF DESIGN

*ALL DOORS AND OPENINGS ON THIS LEVEL ARE 30" AFF TO TOP

*TYPICAL CEILING HEIGHT ON THIS LEVEL = 120"

KITCHEN AS-BUILT DOOR SCHEDULE			
KEY	DESCRIPTION	HEIGHT	HINGE TYPE
1	EXT. HINGED-SLAB	90"	R
2	EXT. HINGED-1506 FRENCH	90"	R
3	FRAMED OPENING	90"	DOORWAY
2	HINGED-DOOR P03	90"	R
3	HINGED-DOOR P03	90"	L

KITCHEN AS-BUILT WINDOW SCHEDULE			
KEY	DESCRIPTION	HEIGHT	TYPE
1	DOUBLE HUNG	66"	DOUBLE HUNG
2	FIXED GLASS	42"	FIXED GLASS
1	BAY WINDOW UNIT	48"	48" X 26.5" - 42" AFF



NOTES

AREA OF DESIGN

*ALL DOORS AND OPENINGS ON THIS LEVEL ARE 64" AFF TO TOP

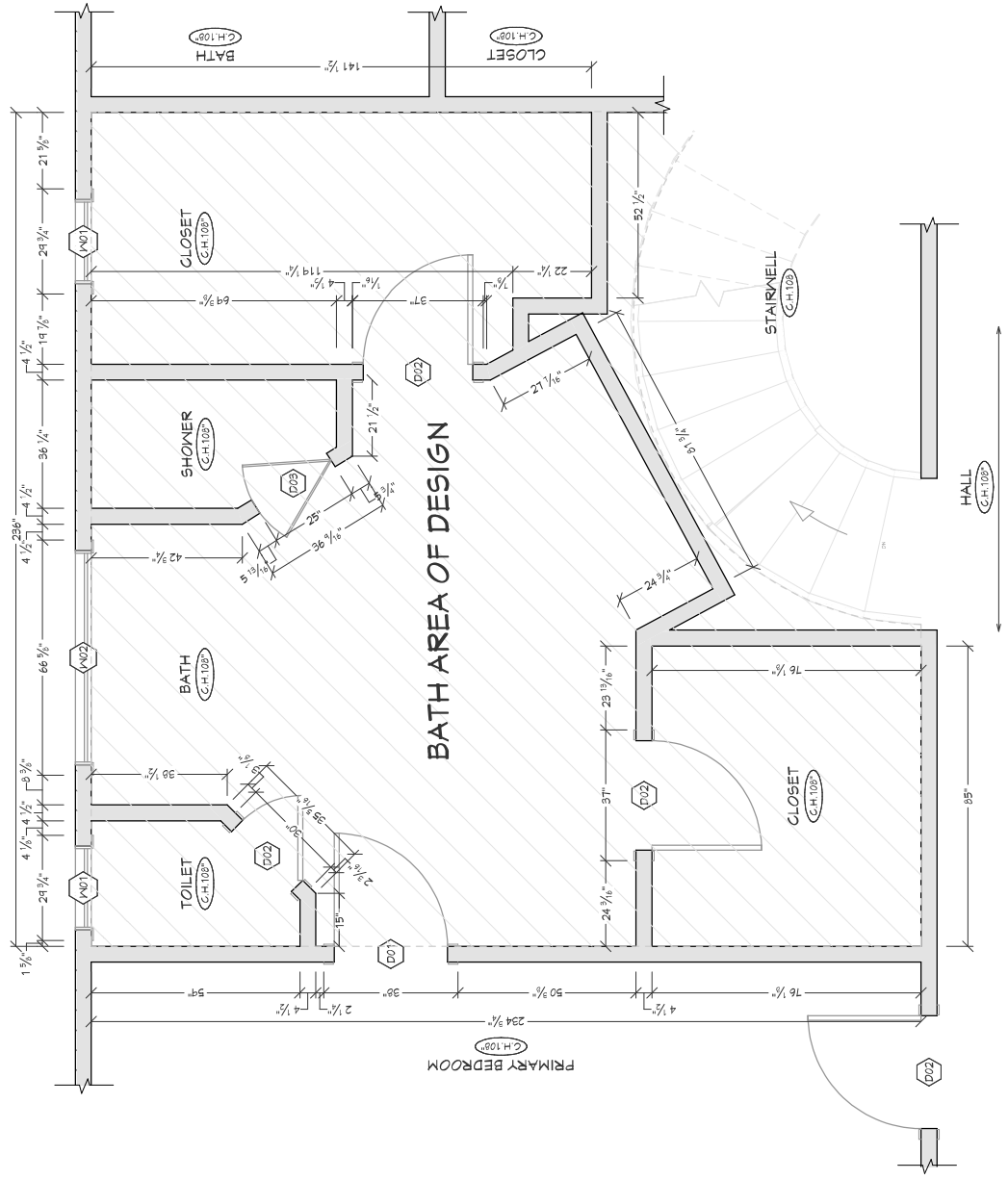
*TYPICAL CEILING HEIGHT ON THIS LEVEL = 108"

BATH AS-BUILT DOOR SCHEDULE

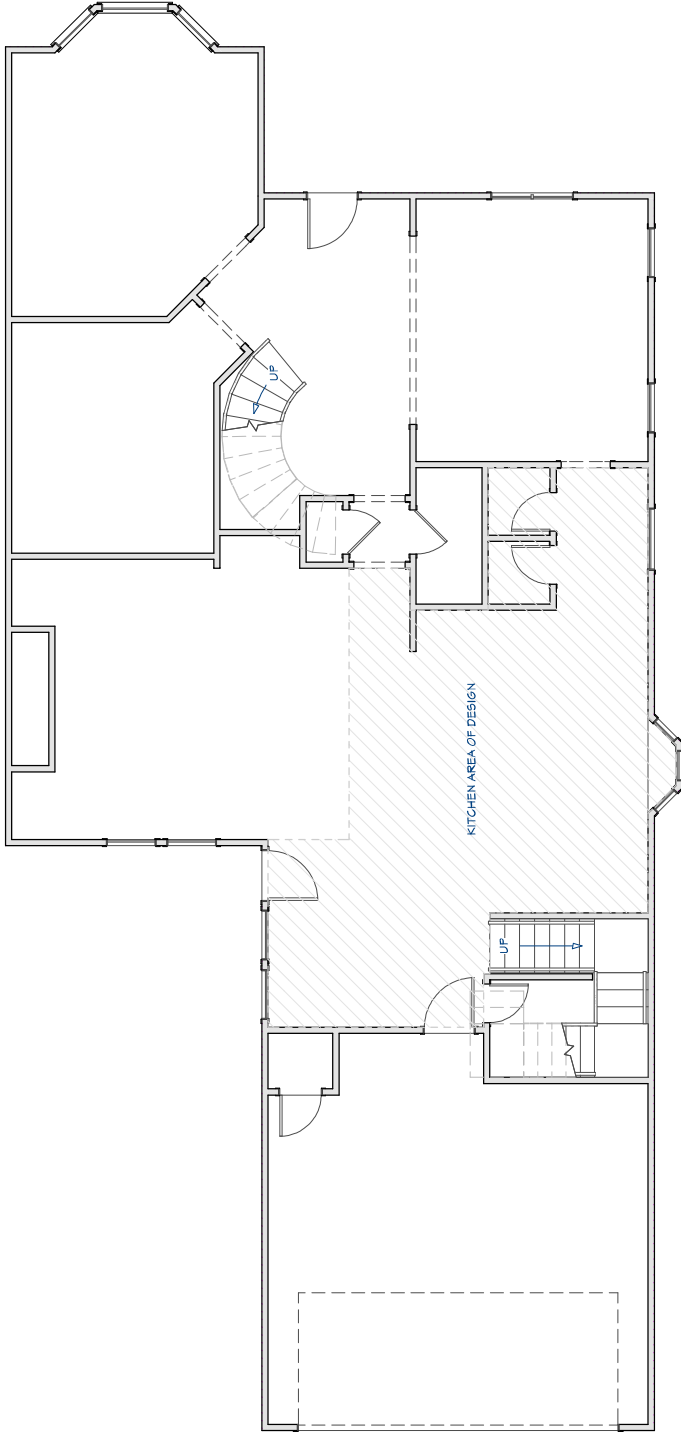
KEY	DESCRIPTION	HEIGHT	HINGE SIDE	TYPE	NOTES	QTY
D01	HINGED-DOOR P03	84"	L	HINGED		1
D02	HINGED-DOOR P03	84"	R	HINGED		4
D03	SHOWER-GLASS SLAB	80"	L	SHOWER		1

BATH AS-BUILT WINDOW SCHEDULE

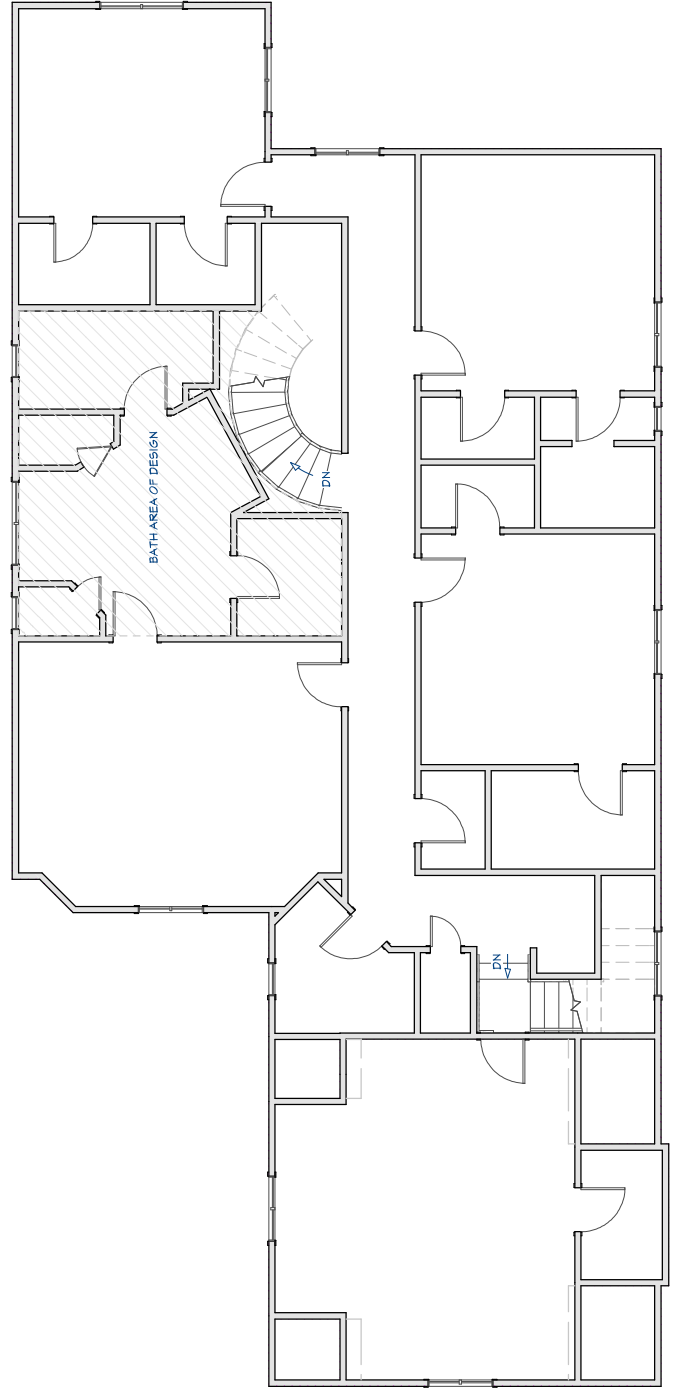
KEY	DESCRIPTION	HEIGHT	TYPE	NOTES	QTY
W01	DOUBLE HUNG	36"	20300DH	DOUBLE HUNG 36" H-48" AFF	2
W02	DOUBLE CASEMENT-LH/RR	48"	5140DC	DOUBLE CASEMENT 48" H-36" AFF	1



BATH AS-BUILT PLAN
 1/2" = 1'



MAIN FLOOR PLAN
 3/16" = 1'



SECOND FLOOR PLAN
 3/16" = 1'